

## Instructions for WILE 200 PC-software



## 1. Index

---

Instructions for WILE 200 PC-software .....	1
1. Index .....	2
Installation.....	3
1.1 Software installation.....	3
1.2 Driver installation.....	3
2. Usage .....	6
2.1 Software updates .....	6
2.2 Meter information .....	7
2.2.1 Scale information.....	7
2.2.2 Diagnostics .....	8

## Installation

Wile 200 PC-software is compatible only with Windows XP and later releases. Microsoft .net framework version 3.5 or higher is required.

### 1.1 Software installation

Find and start the installation .exe package that was downloaded from the webpage. Internet browser typically places the downloaded file to "Downloads" folder or to desktop. Installation package is at the time of writing this manual currently named: Wile200v1-r32-setup.exe. Follow the instructions in installer carefully and after installation go to start menu and to folder named Wile 200 and start Wile200 program.

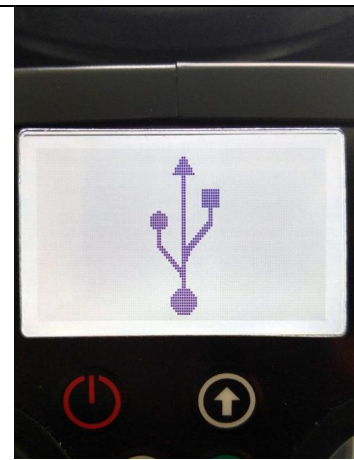
### 1.2 Driver installation



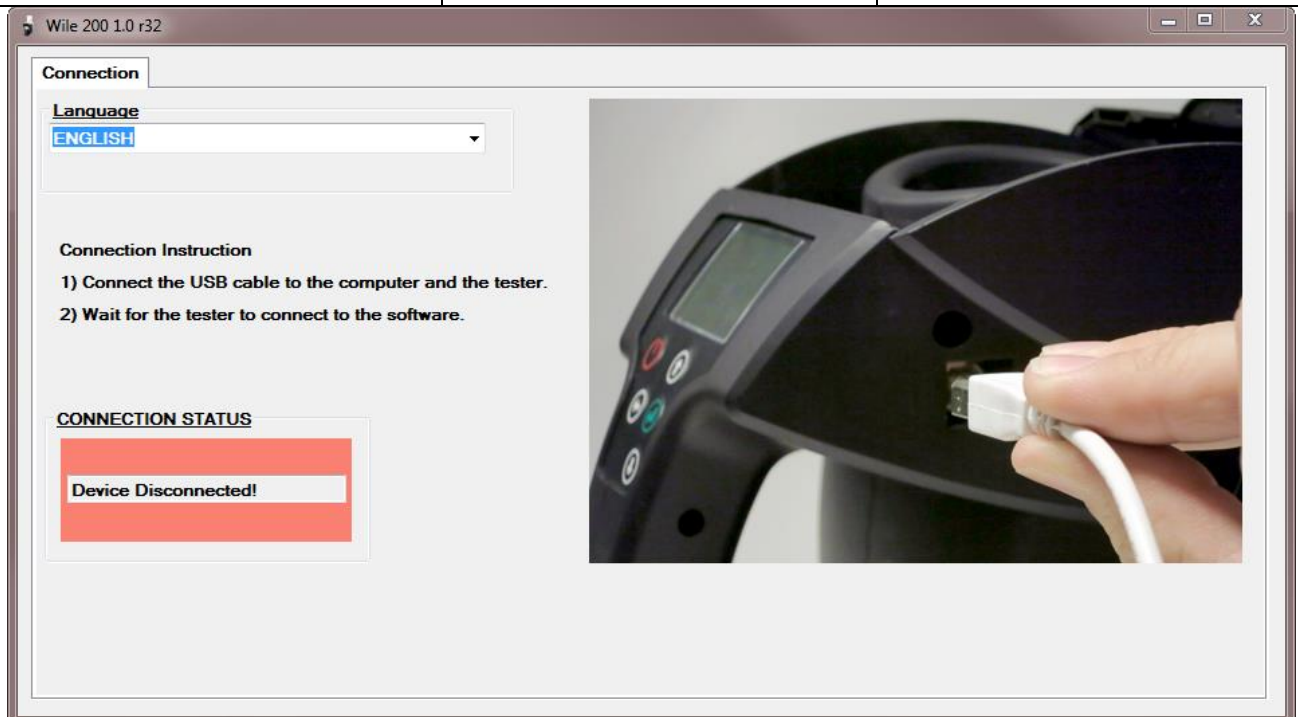
**Illustration 1** USB-port cover



**Illustration 2** USB-port



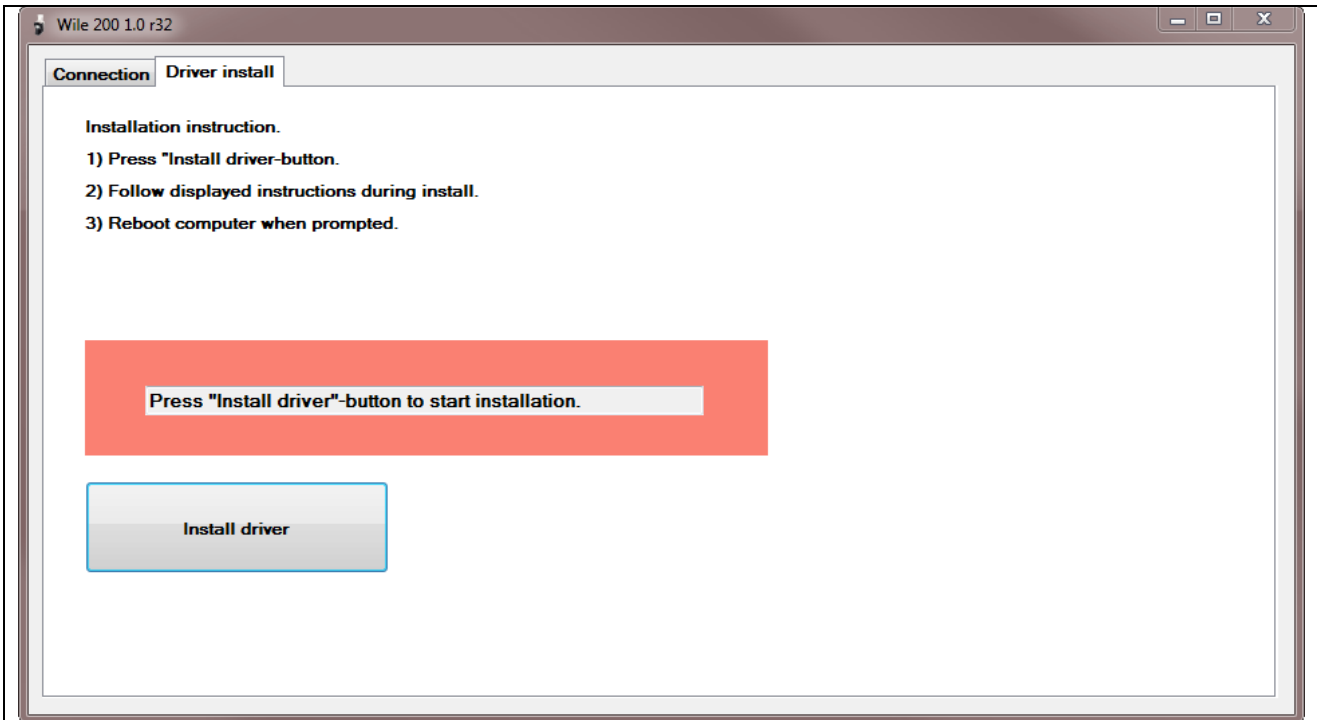
**Illustration 3** Meter display: USB-cable connected



**Illustration 4** Connection view, meter not connected

Connect the USB-cable that was supplied with the meter to computer. Remove hopper and push brush handle back. USB-port is located on right side of the meter. Remove USB-port cover (Illustration 1) and plug the USB-cable to meter.

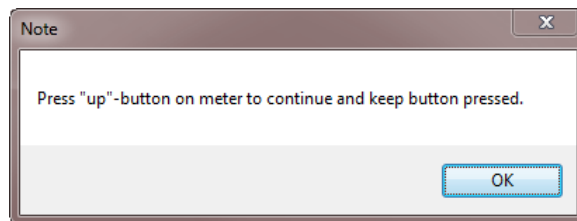
When cable connection is made, computer will automatically start installation of the first part of the driver. Meter detection can take depending on computer from 10 seconds to 10 minutes. Restart computer if prompted.



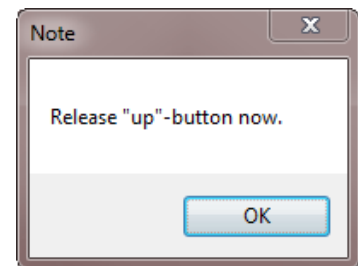
**Illustration 5** Driver installation view



**Illustration 6** "UP"-button



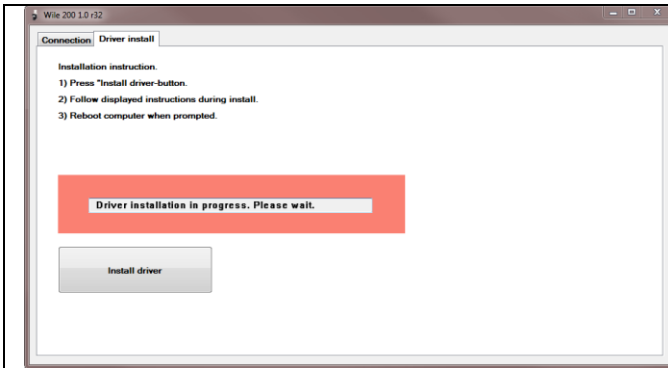
**Illustration 7** Instuction to press the button



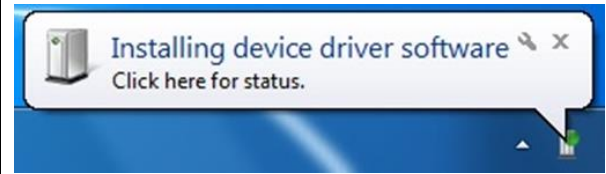
**Illustration 8** Button release note

When meter detection is completed and program is used for the first time, driver installation view (Illustration 5) opens that will guide trough installation of second part of the meter driver.

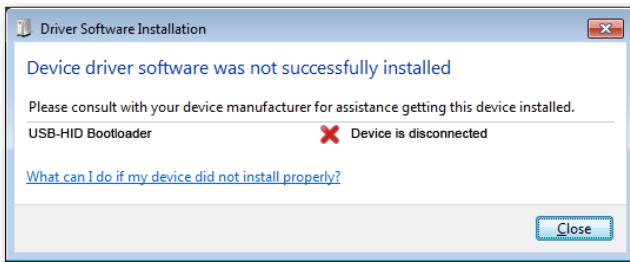
Driver installation is started by pressing "Install driver"-button. Software now instructs user to press "UP"-button on the meter (Illustration 6). Press the "UP"-button and keep it pressed and then press OK to continue (Illustration 7). Release button and press OK to continue, when prompted (Illustration 8).



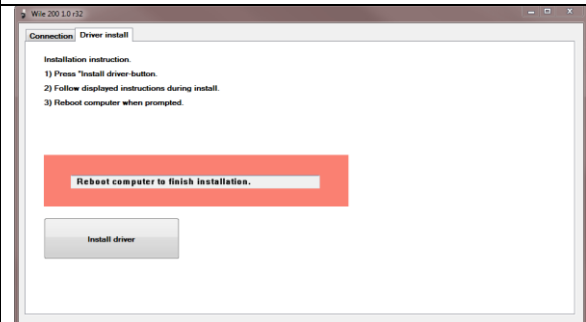
**Illustration 9** Installation in progress



**Illustration 10** Driver installation notification



**Illustration 11** Driver installation error

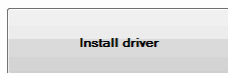


**Illustration 12** Reboot required

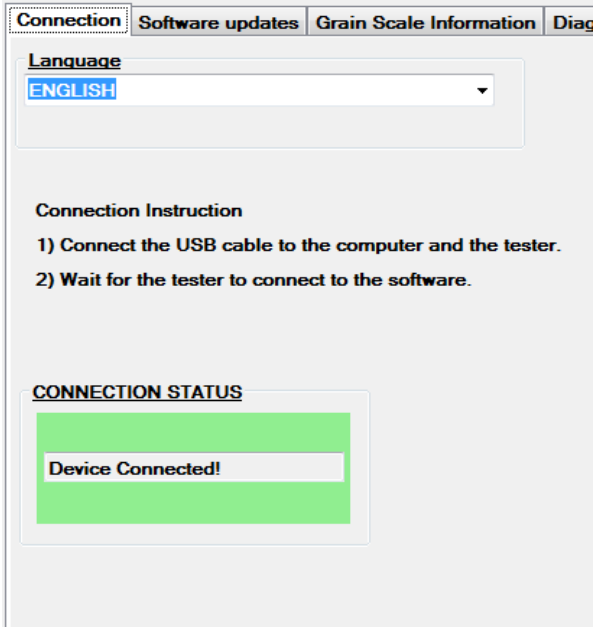
If meter was detected by driver installer, installation of the second driver now starts (Illustration 9). This installation phase can take several minutes in Windows 7 and later operating systems.

If you receive message "Driver installation did not start. Try again". Press again "Install driver"-button and repeat the above steps. If you receive error message from windows that says that device was disconnected and driver can not be installed, this is normal (Illustration 11). Reboot computer, when prompted.

Installation instruction.  
1) Press "Install driver"-button.  
2) Follow displayed instructions during install.  
3) Reboot computer when prompted.



**Illustration 13** Driver installation is completed

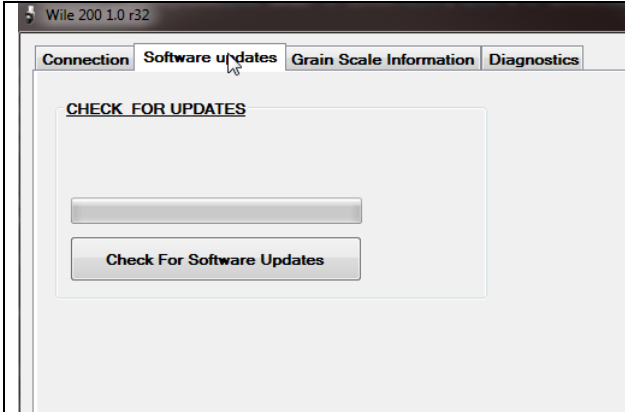


**Illustration 14** Program start view with meter detected

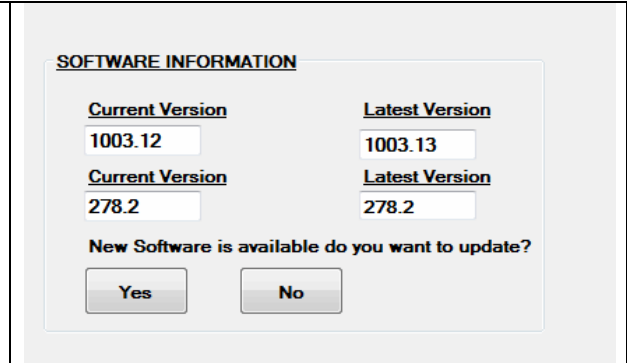
When computer has been restarted, press once more "Install driver"-button and repeat installation steps. When program displays message "Installation completed" (Illustration 13), press power button on meter. Installation now ends and start view is displayed (Illustration 14).

## 2. Usage

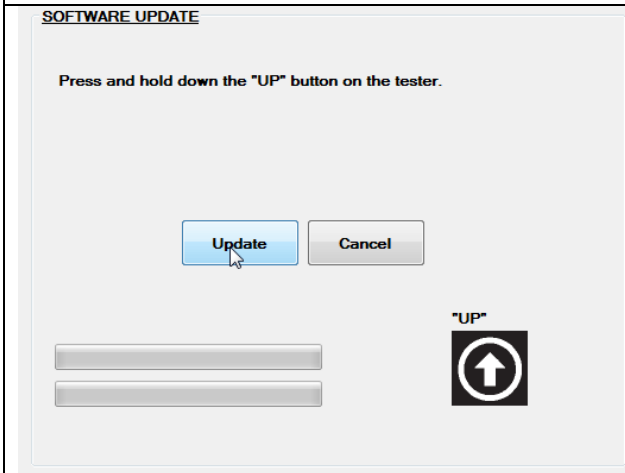
### 2.1 Software updates



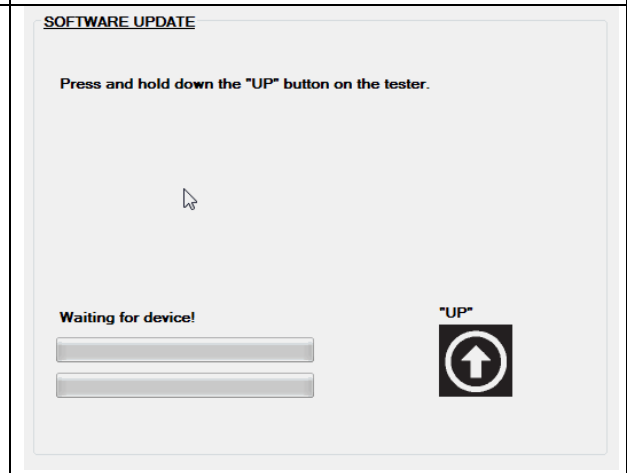
**Illustration 15** Start view of software update search



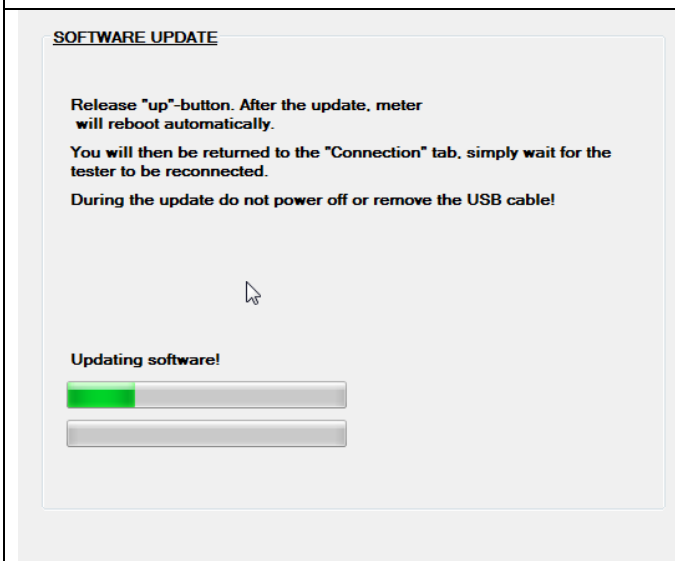
**Illustration 16** New software / scale package update is found



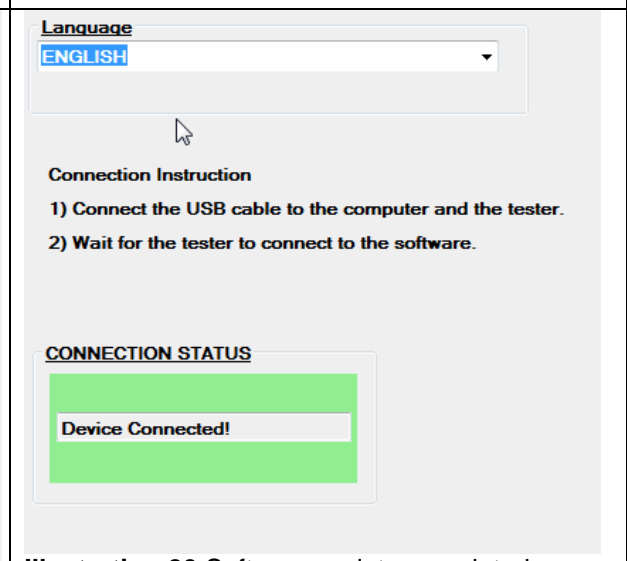
**Illustration 17** Start view of software update tool



**Illustration 18** Meter search in progress



**Illustration 19** Software update in progress



**Illustration 20** Software update completed

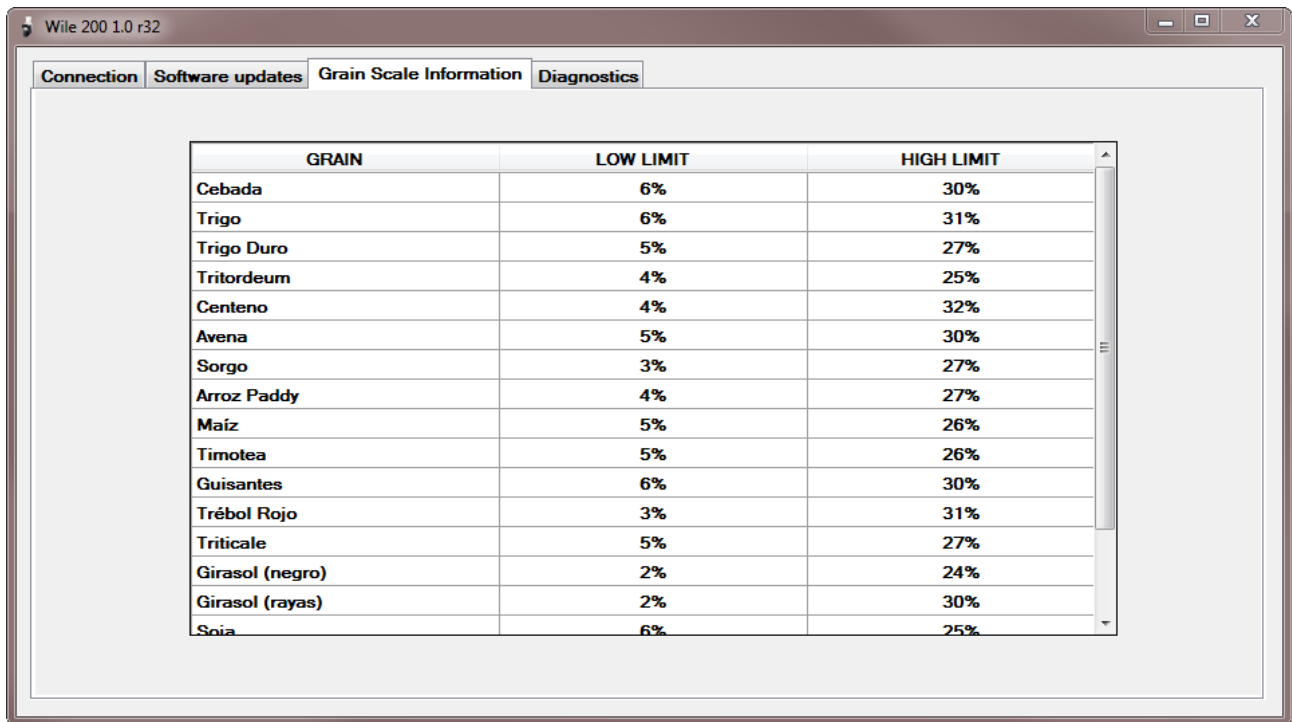
Start software update availability check by pressing "Check for software updates"-button (Illustration 15). Depending on meter's existing software revision update process may now prompt to press and release meter's "UP"-button (Illustration 6). If at this point computer firewall prompts and asks that may "Wile200" access internet, allow access. Internet connection is needed to update checking and retrieval.

If update is found, option to install it to meter is presented (Illustration 16). Press "Yes"-button to continue. Press meter "UP"-button and press "Update"-button on screen to start the update (Illustration 17). When update starts and progressbar move, release "UP"-button (Illustration 19). Wait until meter updating is completed. Do not press buttons or unplug USB-cable while update process is ongoing.

When update is completed, meter will reboot and Wile200 PC application will return to connection screen. At this point it is safe to unplug USB-cable. If meter does not reboot after the update has completed, press "POWER"-button once to reboot the meter.

## 2.2 Meter information

### 2.2.1 Scale information

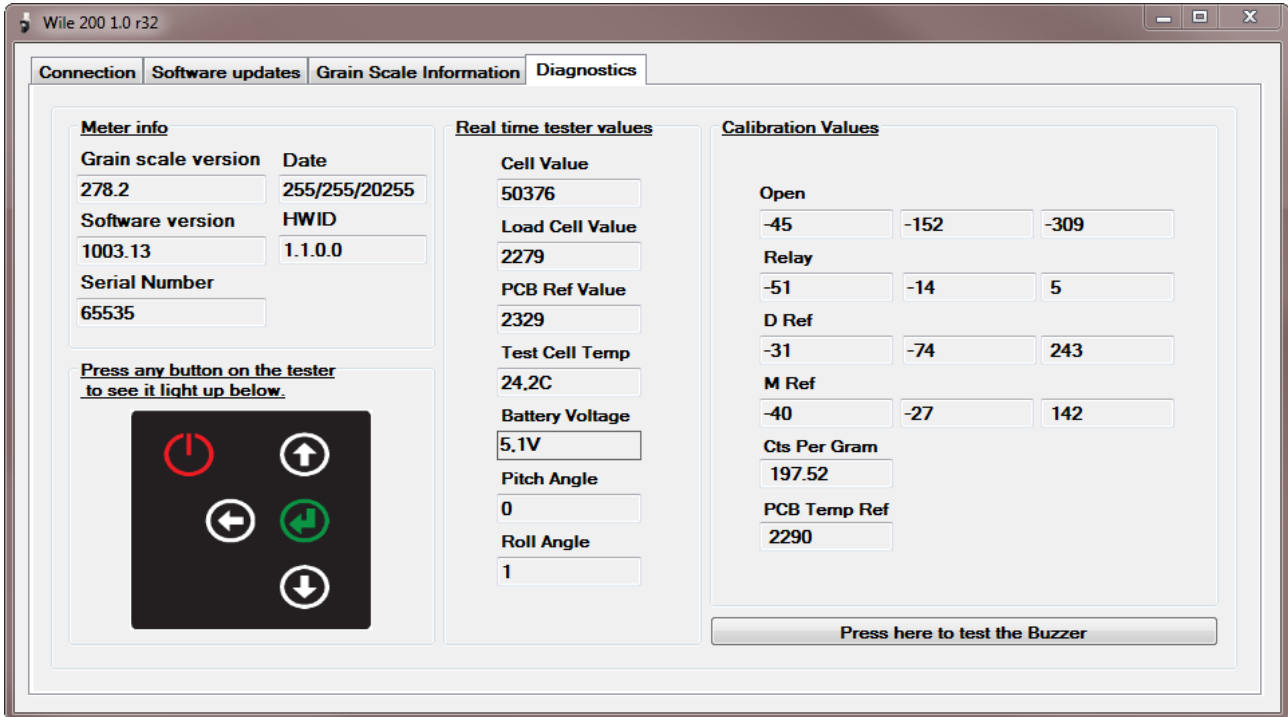


GRAIN	LOW LIMIT	HIGH LIMIT
Cebada	6%	30%
Trigo	6%	31%
Trigo Duro	5%	27%
Tritordeum	4%	25%
Centeno	4%	32%
Avena	5%	30%
Sorgo	3%	27%
Arroz Paddy	4%	27%
Maíz	5%	26%
Timotea	5%	26%
Guisantes	6%	30%
Trébol Rojo	3%	31%
Triticale	5%	27%
Girasol (negro)	2%	24%
Girasol (rayas)	2%	30%
Soia	6%	25%

**Illustration 21** Scale information

Grain scale info view shows grains installed in meter and upper and lower limits of the scale.

## 2.2.2 Diagnostics



**Illustration 22** Diagnostics view

Diagnostics view is mainly for service and customer support purposes. “Meter info” –section has most important information needed in customer support cases:

- Scale package version
- Production date
- Software version
- Meter hardware id (HWID)
- Serial number